

PARTNER(/EN/CONTE

HFU(/EN/CONTENT/H

CBPF


CLUSTER

> HFU(/en/content/hfu) > COVID-19 - App and PFBI Visualization Guidance Note

COVID-19 - App and PFBI Visualization Guidance Note

Download this Page(/page/print/pdf/node/699)

Content:

- [What is the COVID-19 App? \(#what is\)](#).
- [Adding data on the COVID-19 App: \(#app\)](#).
 - [for CBPF \(#cbpf\)](#).
 - [for CERE \(#CERE\)](#).
- [The COVID-19 Allocations Visualization on the PF Data Hub \(#map\)](#).  (<https://ocha.fleeq.io/covid19allocations>).
 - [The Distribution of Allocations' map \(#map 2\)](#).
 - [The Allocations' Timeline \(#timeline\)](#).

What is the COVID-19 App?_

CBPF GRANT MANAGEMENT SYSTEM (GMS)

The COVID-19 app was created to allow CBPF and CERF to record their work related to responding to the COVID-19 outbreak. This user-friendly app was designed to be flexible and straightforward, allowing CBPF and CERF to add and edit data at any time. The app also serves as an intermediary platform solely dedicated to COVID-19 data between the Grant Management System (GMS) and the OCHA Pooled Funds Data Hub. All data entered in the app is captured in a global and interactive visualization hosted by the PF Data Hub. This visualization includes both a map which provides a global COVID-19 related allocations' overview, and a timeline which displays the key dates and milestones of OCHA's response to the pandemic.

The COVID-19 visualization can be accessed through this [link\(https://pfddata.unocha.org/COVID19/\)](https://pfddata.unocha.org/COVID19/).

Adding data on the COVID-19 App

In order to add data on the app (for CBPF):

Note: Only GMS users with **Fund Manager or HFU - GMS Admin Business Roles** will be able to enter and edit data on the COVID-19 app.

Step 1: Log-in to the COVID-19 app

- Go to: [https://cbpf.unocha.org/COVID19/\(https://cbpf.unocha.org/COVID19/\)](https://cbpf.unocha.org/COVID19/(https://cbpf.unocha.org/COVID19/)) and log-in with your Humanitarian ID;
- Select your country in the drop-down menu and click on [Search].

Step 2: Add the Allocation (previous or new)

- Click on [Add] to link a COVID-19 related allocation to your country profile on the app;

cbpf.unocha.org/COVID19/

Allocations Home gms-support@un.org Logout

165 Allocations 45 Countries 16.20 Million People Targeted \$159.01M CBPF \$131.62M CERF

Manage Allocations

Country

COVID Allocation of **CBPF**

Linked Allocations

No Allocations details found

© 2020 - UNOCHA

- The page will show all the CBPF's 2019 and 2020 allocations. In order to link an allocation (completely or partly), click on the Allocation Title hyperlink;

165 Allocations

45 Countries

16.20 Million People Targeted

\$159.01M CBPF

\$131.62M CERF

Allocation Type

Country

Yemen

Search

Allocation Title

[RA1 2020](#)



Launch Date

12/03/2020

Allocation Summary

RA1 2020

Allocation Source

Reserve

Planned Allocation Budget

US\$ 3.50

Allocation Year

2020

Allocation Title

[2nd Standard Allocation 2019](#)

Launch Date

11/11/2019

Allocation Summary

2nd Standard Allocation 2019

Allocation Source

Standard

Planned Allocation Budget

US\$ 110,000,000.00

Allocation Year

2019

Allocation Title

[Third Reserve Allocation 2019](#)

Launch Date

08/09/2019

Allocation Source

Reserve

Planned Allocation Budget

US\$ 14,000,000.00

Allocation Year

2019

CBPF GRANT MANAGEMENT SYSTEM (GMS)

The HFU has the possibility to either add a **whole** allocation responding to the COVID-19 outbreak or **part** of an ongoing allocation (i.e. projects that were overwritten with a revision and partly re-programmed to respond to the COVID-19 outbreak, ongoing projects that have an emergency component that will be used to respond to the outbreak, etc....)

1- Adding a **whole** allocation:

- Some fields in the App are automatically generated from the GMS data. Fill out all the remaining fields then click on [Save & Close]. Note that “Persons with Disabilities” should, like on GMS, be counted out of the total affected persons. HFUs can edit the data inserted in the app at any time.
- **Important:** Don't forget to click on the small tick-box “Publish” to publish the data on the PFBI!

CBPF GRANT MANAGEMENT SYSTEM (GMS)

cbpf.unocha.org/COVID19/allocation/detail?fnd=64&at=244

Allocations Home gms-support@un.org Logout

165 Allocations 45 Countries 16.20 Million People Targeted \$159.01M CBPF \$131.62M CERF

Allocation Type Detail

COVID Allocation of **CBPF**

Country **Yemen**

Allocation Title: RA1 2020 Allocation Type: Reserve Allocation Year: 2020

Allocation Budget: 3.50 Launch Date: 12/03/2020

Publish 

Allocation Theme

Allocation Summary

Location Summary

Affected Persons

Internally Displaced People		Returnees	
Men	Women	Men	Women

CBPF GRANT MANAGEMENT SYSTEM (GMS)

2- Adding **part** of an allocation/project(s):

- Tailor the allocation information automatically generated on the app to reflect only the projects' components that were re-designed to respond to the COVID-19 outbreak. Amend the allocation title (this format could be useful: **COVID-19/2019 SA1 Re-programming**), budget, theme, launch date and summary and fill out the remaining fields. The new "Allocation Budget" should reflect the total amount that was re-programmed to the COVID-19 response, and the "Launch Date" should reflect the approximate date when the projects were overwritten with the revisions. Make sure not to forget to edit the relevant Affected Persons fields and note that "Persons with Disabilities" should, like on GMS, be counted out of the total affected persons. Once all the information is inserted on the app, click on [Save & Close]. HFUs can edit the data inserted in the app at any time.
- **Important: Don't forget to click on the small tick-box "Publish" to publish the data on the PFBI!**

CBPF GRANT MANAGEMENT SYSTEM (GMS)

cbpf.unocha.org/COVID19/allocation/detail?fnd=64&at=244

Allocations Home gms-support@un.org [Logout](#)

165 Allocations 45 Countries 16.20 Million People Targeted \$159.01M CBPF \$131.62M CERF

Allocation Type Detail

COVID Allocation of **CBPF**

Country **Yemen**

Allocation Title: Allocation Type: Allocation Year:

Allocation Budget: Launch Date: Publish

Allocation Theme:

Allocation Summary:

Location Summary:

Affected Persons

Internally Displaced People		Returnees	
Men	Women	Men	Women

CBPF GRANT MANAGEMENT SYSTEM (GMS)

Step 3: Link the corresponding projects

When an allocation is added and saved on the app, a list of linked projects will be automatically generated from the system.

CBPF GRANT MANAGEMENT SYSTEM (GMS)

cbpf.unocha.org/COVID19/ ☆ L ⋮

Allocations Home gms-support@un.org [Logout](#)


165 Allocations 45 Countries 16.20 Million People Targeted \$159.01M CBPF \$131.62M CERF

Manage Allocations

Country:

COVID Allocation of CBPF

Linked Allocations
Add

Allocation Title 2020 1st Round Standard Allocation	Allocation Source Standard	Allocation Year 2020	Project(s) Linked 31 		
Allocation Budget US\$ 3,813,214.00	Allocation Launch Date 08/04/2020	Published Yes			
Allocation Theme The highest priorities identified in the HRP along with funding provisions for the mainstreaming of COVID-19 response in all sectors.					
Allocation Summary The allocation responds to the 'critical funding requests' of clusters against the prioritized Humanitarian Response Plan requirements considering COVID-19 mitigation and response. EHF allocated US\$3.8 million in support of COVID-19 mitigation and response activities.					
Location Summary Ethiopia					
Affected Persons					
Affected Person Type	Men	Women	Boys	Girls	Total

CBPF GRANT MANAGEMENT SYSTEM (GMS)

This automatic list includes all approved projects (related to the selected allocation) that already have **COVID-19 components on GMS**, such as:

- A Strategic Objective linked to the COVID-19 GHRP in their Logical Framework;
- A Sector Specific Objective tagged with the “COVID-19” prefix or linked to the COVID-19 GHRP;
- A standard indicator tagged with the “COVID-19” prefix or linked to the COVID-19 GHRP;
- A standard activity tagged with the “COVID-19” prefix or linked to the COVID-19 GHRP.

These projects' budgets will be automatically considered 100% participating to the COVID-19 response.

CBPF GRANT MANAGEMENT SYSTEM (GMS)

CBPF GRANT MANAGEMENT SYSTEM (GMS)

cbpf.unocha.org/COVID19/project?fnd=53&at=252




Allocations Home gms-support@un.org Logout

165 Allocations 45 Countries 16.20 Million People Targeted \$159.01M CBPF \$131.62M CERF

Link Projects

2020 1st Round Standard Allocation **CBPF** Add


61 Total Project(s) 31 Project(s) linked 0 Project(s) re-programmed

#	Project Code Status	Project Title	Cluster	Organization Org. Type	Sub IP	Affected Persons (with Disabilities) for COVID	Budget Project Budget Participation % Budget for COVID	Re-prog.	
1	ETH-20/DDA-3379/SA1/E/INGO/15763 Implementation & Reporting	Creating Access to Learning through Radio for IDPs/Returnees/host communities in Remote Areas of SNN... View More	EDUCATION(100.00%)	International Rescue Committee INC (IRC) International NGO	0	24,545 (0) 24,545 (0)	US\$ 750,000.00 100.00 % for COVID-19 ⓘ US\$ 750,000.00	<input type="checkbox"/>	
2	ETH-20/DDA-3379/SA1/E/INGO/15894 Implementation & Reporting	Safe, Protective and Quality primary education for emergency affected children in Somali and Oromia ... View More	EDUCATION(100.00%)	Norwegian Refugee Council (NRC) International NGO	1	37,240 (380) 37,240 (380)	US\$ 750,000.00 100.00 % for COVID-19 ⓘ US\$ 750,000.00	<input type="checkbox"/>	
3	ETH-20/DDA-3379/SA1/H/INGO/15846 Implementation & Reporting	Ensuring Continuity of Lifesaving Primary Health Care Services in Disease Outbreak and	Health(100.00%)	International Rescue Committee INC (IRC)	0	120,000 (0) 120,000 (0)	US\$ 250,000.00 100.00 % for COVID-19 ⓘ	<input type="checkbox"/>	

CBPF GRANT MANAGEMENT SYSTEM (GMS)

However, the HFU will be able edit the percentages manually at any time. You will also have the option to tick the “**Re-programmed**” box if it is a re-programmed project.

Link Projects

2020 1st Round Standard Allocation CBPF Add									
61 Total Project(s)		31 Project(s) linked		0 Project(s) re-programmed					
#	Project Code Status	Project Title	Cluster	Organization Org. Type	Sub IP	Affected Persons (with Disabilities) for COVID	Budget Project Budget Participation % Budget for COVID	Re- prog.	
1	ETH-20/DDA-3379/SA1/E/INGO/15763 Implementation & Reporting	Creating Access to Learning through Radio for IDPs/Returnees/host communities in Remote Areas of SNN... View More	EDUCATION(100.00%)	International Rescue Committee INC (IRC) International NGO	0	24,545 (0) 12,273 (0)	US\$ 750,000.00 50 % for COVID-19 ⓘ US\$ 375,000.00	<input checked="" type="checkbox"/>	

Make sure to click on **SAVE** at the bottom of the page to save your progress and on the **Publish** tick box to reflect the data on the PFBI.

CBPF GRANT MANAGEMENT SYSTEM (GMS)

Total:		1,818,200 (24,551)	US\$ 14,109,100.01
		1,818,200 (24,551)	US\$ 14,109,100.01

15 Approved Project(s)
US\$ 5.97 M Approved Budget
768.45 K (22.65 K)
Affected Persons (with Disabilities)

Save
Back to Allocations
→
 I confirm to publish the allocation project(s) for COVID. ?
Agree

© 2020 - UNOCHA

You will also be able to manually add additional projects that do not have COVID-19 components reflected on GMS (and are hence not automatically linked to your allocation on the COVID-19 app) but are still responding to the COVID-19 pandemic. Don't forget to click on SAVE!

CBPF GRANT MANAGEMENT SYSTEM (GMS)

cbpf.unocha.org/COVID19/project/add?at=252&fnd=53

Allocations Home

gms-support@un.org

Logout

165 Allocations

45 Countries

16.20 Million People Targeted

\$159.01M CBPF

\$131.62M

CERF

Add Projects

2020 1st Round Standard Allocation **CBPF**

Add	#	Project Code Status	Project Title	Cluster Budget	Organization Org. Type	Sub IP	Beneficiary / Disabled	Project Participation %	Re- programmed
<input type="checkbox"/>	1	ETH-20/DDA-3379/SA1/NFI/ES/INGO/15770 Budget Cleared	Emergency shelter / NFI and COVID-19 support in Kumbi and Babile woredas of East Hararghe zone ,Oro... View More	NFI and Emergency Shelter(100.00%) US\$ 448,816.70	Care Ethiopia (CARE) International NGO	0	10,109 / 1,242	0 % for COVID-19	<input type="checkbox"/>
<input type="checkbox"/>	2	ETH-20/DDA-3379/SA1/WASH/INGO/15771 Project Draft	COVID-19 Emergency WASH Response to support Internally Displaced People (IDPs) and Host Communities ... View More	WASH(100.00%) US\$ 0.00	Danish Refugee Council (DRC) International NGO	0	0 / 0	0 % for COVID-19	<input type="checkbox"/>
<input type="checkbox"/>	3	ETH-20/DDA-3379/SA1/WASH/UN/15855 IP submission of GA to HFU	Emergency support for NFI procurement and durable water scheme	WASH(100.00%) US\$ 659,844.95	United Nations Children's Fund (UNICEF) UN Agency	1	63,670 / 10,634	0 % for COVID-19	<input type="checkbox"/>



CBPF GRANT MANAGEMENT SYSTEM (GMS)

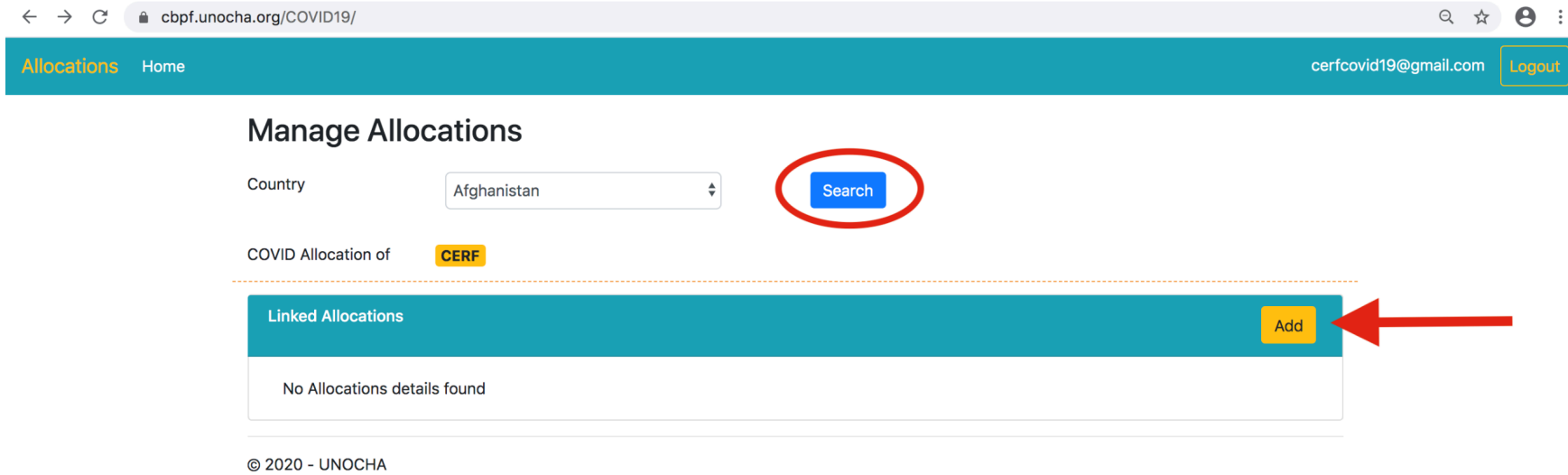
In order to add data on the app (for CERF):

Step 1: Log-in to the COVID-19 app

- Go to: [https://cbpf.unocha.org/COVID19/\(https://cbpf.unocha.org/COVID19/\)](https://cbpf.unocha.org/COVID19/(https://cbpf.unocha.org/COVID19/)) and log-in with your Humanitarian ID;
- Select your country in the drop-down menu and click on [Search].

Step 2: Add the Allocation (previous or new)

- Click on [Add] to link a COVID-19 related allocation to your country profile on the app.



cbpf.unocha.org/COVID19/

Allocations Home cerfcovid19@gmail.com Logout

Manage Allocations

Country: Afghanistan

COVID Allocation of: CERF

Linked Allocations

No Allocations details found

© 2020 - UNOCHA

- Fill out all the fields then click on [Save & Close].

Please note that “Persons with Disabilities” should be counted out of the total affected persons.

CERF team can add and edit data in the App at any time.

Important: Don't forget to click on the small tick-box “Publish” to publish the data on the PFBI!

CBPF GRANT MANAGEMENT SYSTEM (GMS)

Allocation Type Detail

COVID Allocation of **CERF**

Country **Afghanistan**

Allocation Title

Allocation Type

Allocation Year

Allocation Budget

Launch Date

Publish 

Allocation Theme

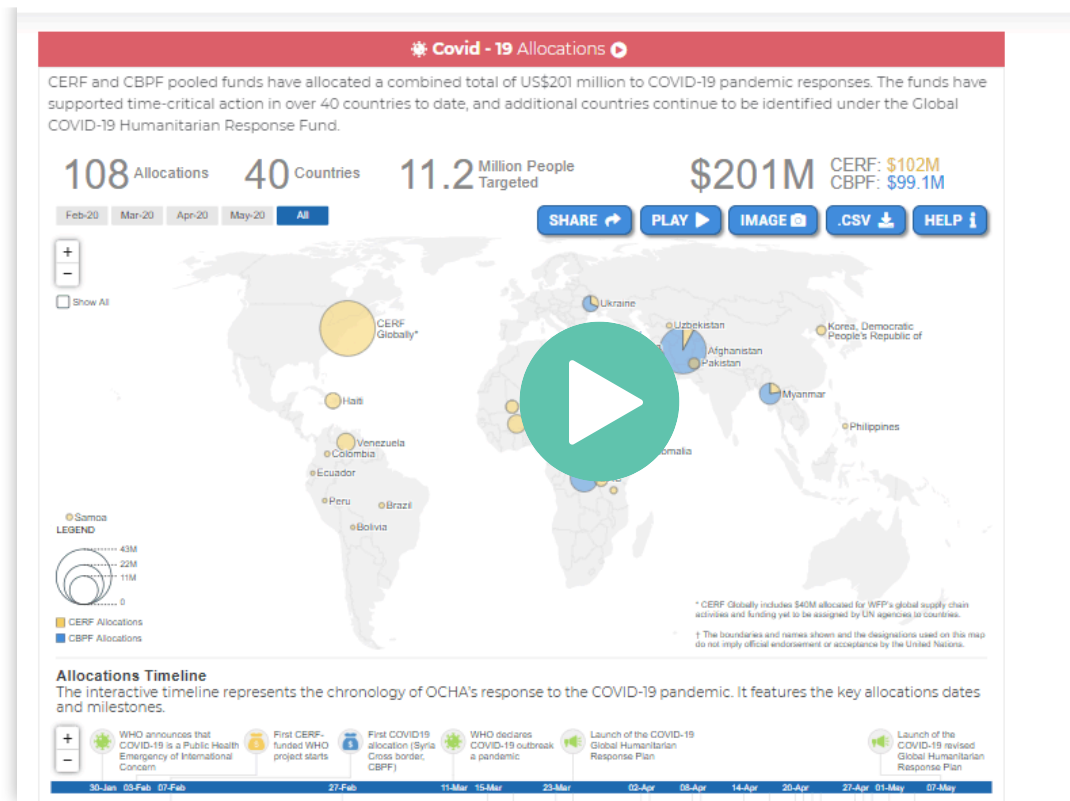
Allocation Summary

Location Summary

Affected Persons

Internally Displaced People		Returnees	
Men	Women	Men	Women
<input type="text"/>	<input type="text"/>	<input type="text"/>	<input type="text"/>
Boys	Girls	Boys	Girls
<input type="text"/>	<input type="text"/>	<input type="text"/>	<input type="text"/>

The COVID 19 Allocation Visualization on the PF Data Hub  (<https://ocha.fleeq.io//covid19allocations>)



CBPF GRANT MANAGEMENT SYSTEM (GMS)

CBPF GRANT MANAGEMENT SYSTEM (GMS)

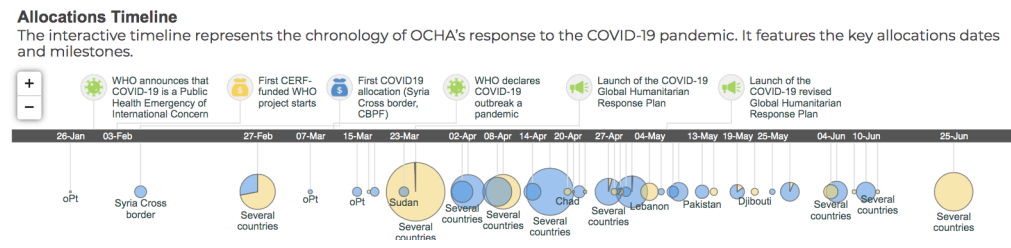
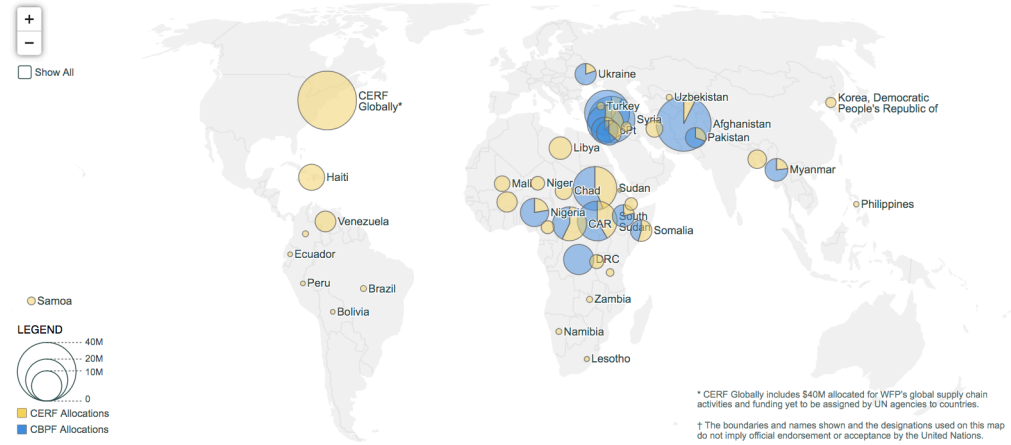
Covid - 19 Allocations

CERF and CBPF pooled funds have allocated a combined total of US\$291 million to respond to the COVID-19 pandemic. To date, the funds have supported a broad range of humanitarian partners to launch time-critical projects in over 45 countries. Additional opportunities to support partners responding to the Global COVID-19 HRP continue to be identified.

165 Allocations **45** Countries **16.5** Million People Targeted **\$291M**
CBPF: \$159M
CERF: \$132M

Jan-20 Feb-20 Mar-20 Apr-20 May-20 Jun-20 All

[SHARE](#) [PLAY](#) [IMAGE](#) [.CSV](#) [HELP](#)



CBPF GRANT MANAGEMENT SYSTEM (GMS)

Aggregated data for all months. Timeline pies follow the legend size when "All" is selected.

© OCHA 2020

The data entered in the app is captured in a global and straightforward visualization, hosted by the PFBI at this address:
[https://pfbi.unocha.org/COVID19/\(https://pfbi.unocha.org/COVID19/\)](https://pfbi.unocha.org/COVID19/(https://pfbi.unocha.org/COVID19/)).

The COVID-19 Allocations visualization is a set of two visuals providing real-time information on all CERF and CBPF allocations responding to the COVID-19 Pandemic. It is composed of the Distribution of Allocations map, and the Allocations Timeline.

DISTRIBUTION OF ALLOCATIONS MAP

The distribution of allocations visual is an interactive map displaying in real-time a global COVID-19 allocations' overview. It is public and allows users not only to visualize at a glance the global and in-country situation, but also to extract projects' raw data as Excel sheets.

Users can configure the map by selecting a specific period. Use the timeline to select one or several months. To access all available data, click on **[All]**.

CBPF GRANT MANAGEMENT SYSTEM (GMS)

 Covid - 19 Allocations 

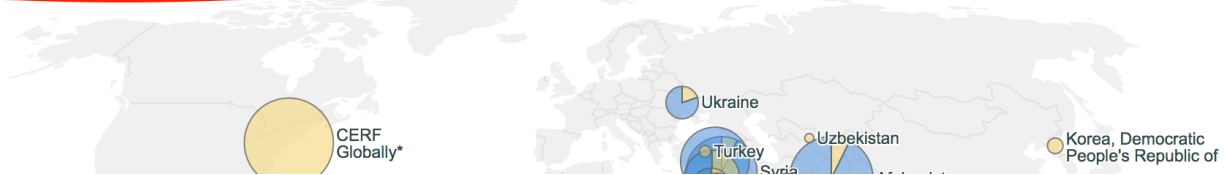
CERF and CBPF pooled funds have allocated a combined total of US\$291 million to respond to the COVID-19 pandemic. To date, the funds have supported a broad range of humanitarian partners to launch time-critical projects in over 45 countries. Additional opportunities to support partners responding to the Global COVID-19 HRP continue to be identified.

165 Allocations 45 Countries 16.5 Million People Targeted \$291M CBPF: \$159M CERF: \$132M

- Jan-20
- Feb-20
- Mar-20
- Apr-20
- May-20
- Jun-20
- All

- SHARE 
- PLAY 
- IMAGE 
- .CSV 
- HELP 

+
-
 Show All



Users can hover over a CERF or CBPF circle to access additional details on the country, including the actual funding and data related to the Targeted Persons, with a breakdown of different categories as relevant to the country's situation.

CBPF GRANT MANAGEMENT SYSTEM (GMS)

165 Allocations

45 Countries

16.5 Million People Targeted

\$291M

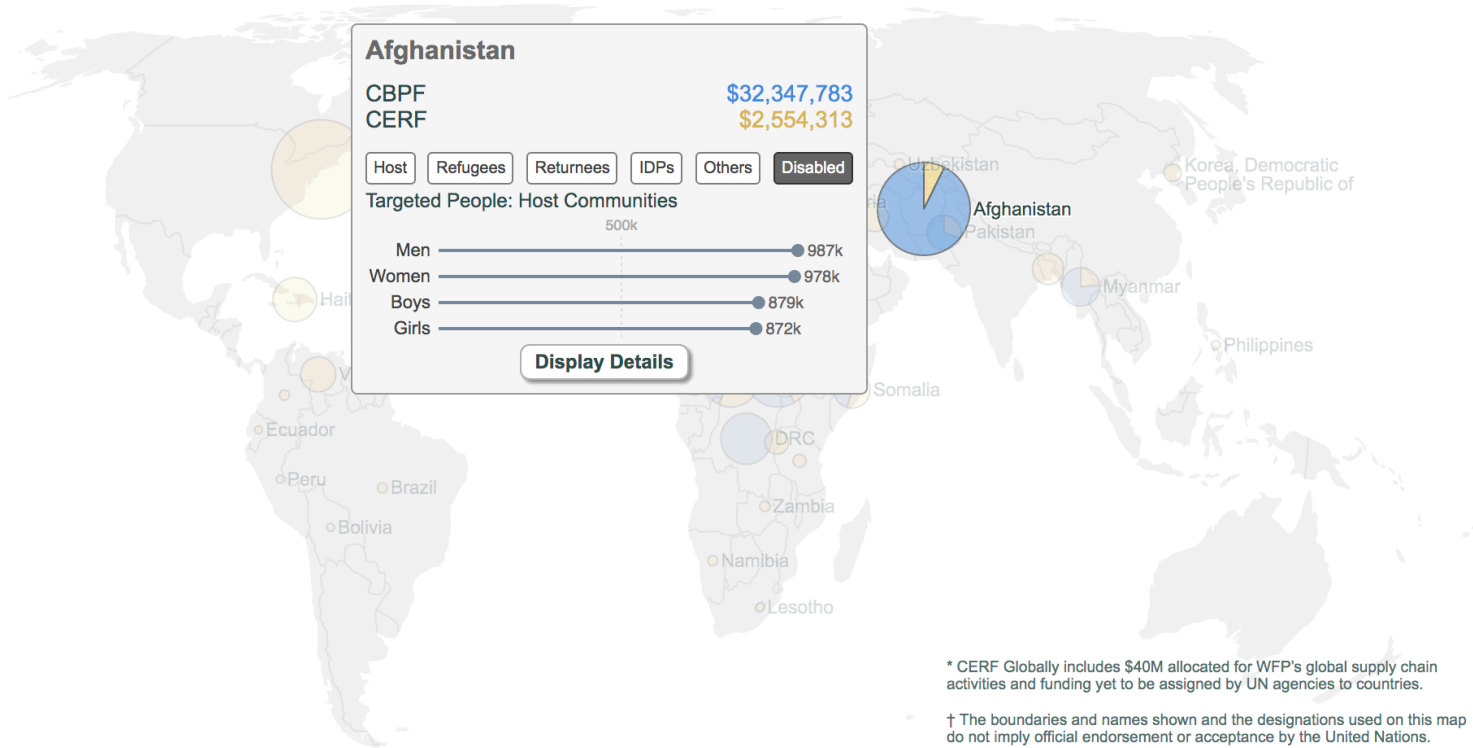
CBPF: \$159M
CERF: \$132M

Jan-20 Feb-20 Mar-20 Apr-20 May-20 Jun-20 All

SHARE PLAY IMAGE .CSV HELP



Show All



Afghanistan

CBPF \$32,347,783
CERF \$2,554,313

Host Refugees Returnees IDPs Others Disabled

Targeted People: Host Communities

Men	987k
Women	978k
Boys	879k
Girls	872k

500k

Display Details

LEGEND

- 40M
- 20M
- 10M
- 0
- CERF Allocations
- CBPF Allocations

* CERF Globally includes \$40M allocated for WFP's global supply chain activities and funding yet to be assigned by UN agencies to countries.
† The boundaries and names shown and the designations used on this map do not imply official endorsement or acceptance by the United Nations.

This tooltip includes a 'Display Details' button, which reveals a complete, in-country summary of the allocation. This summary is available below the map.

CBPF GRANT MANAGEMENT SYSTEM (GMS)

CBPF — Afghanistan

Allocation Title	Allocation Source	Allocation Amount	Date of launch
2020 1st Reserve Allocation	Reserve	\$1,500,000	27 February, 2020

Allocation Theme

Improve preparedness, detection and support emergency response to COVID-19 in Afghanistan

Allocation Summary

The AHF decided to launch a reserve allocation of \$1.5 million to increase national and local preparedness and to enhance humanitarian partners' response capacities. The funds will be directed to the response led by WHO with three objectives: ensure early detection and confirmation, limit transmission through proper case management, raise awareness among the public and health care practitioners.

Location Summary

All regions (Capital, Central Highland, Northern, Northeastern, Eastern, Southern, Southeastern, and Western) of Afghanistan

Affected Persons

Affected Person Type	Men	Women	Boys	Girls	Total
Host Communities	130000	110000	30000	30000	300000
Returnees	70000	50000	15000	15000	150000
Persons with disabilities	8000	4000	1000	1000	14000

* Number of people targeted with few allocations are not yet available.

* Number of people targeted may include double-counting.

CERF — Afghanistan

Allocation Title	Allocation Source	Allocation Amount	Date of launch
UNICEF: Preventing and Responding to the COVID-19 Pandemic (20-RR-CEF-030)	Rapid Response	\$749,000	25 March, 2020

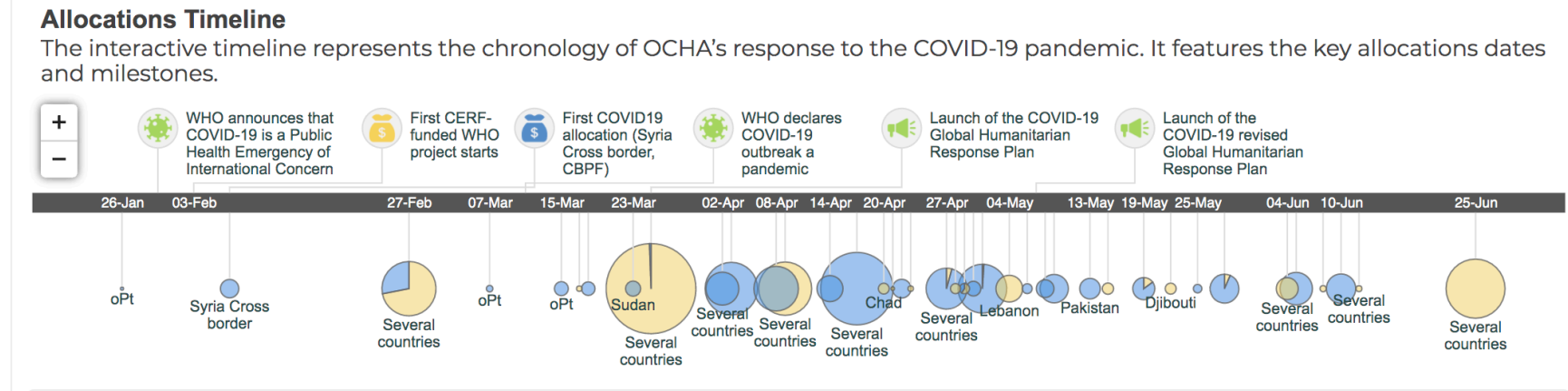
Allocation Theme

Preventing and Responding to the COVID-19 Pandemic

Allocation Summary

CBPF GRANT MANAGEMENT SYSTEM (GMS)

Allocation Summary
 The main objective of this project is to provide life-saving health, water, sanitation and hygiene (WASH), education and child-protection assistance in 22 countries: Afghanistan, Bolivia, Brazil, Burkina Faso, Cambodia, Chad, Colombia, Ecuador, Haiti, Iran, Iraq, Libya, Mali, Myanmar, Niger, the occupied Palestinian territory, Peru, Sudan, Tanzania, Turkey, Ukraine and



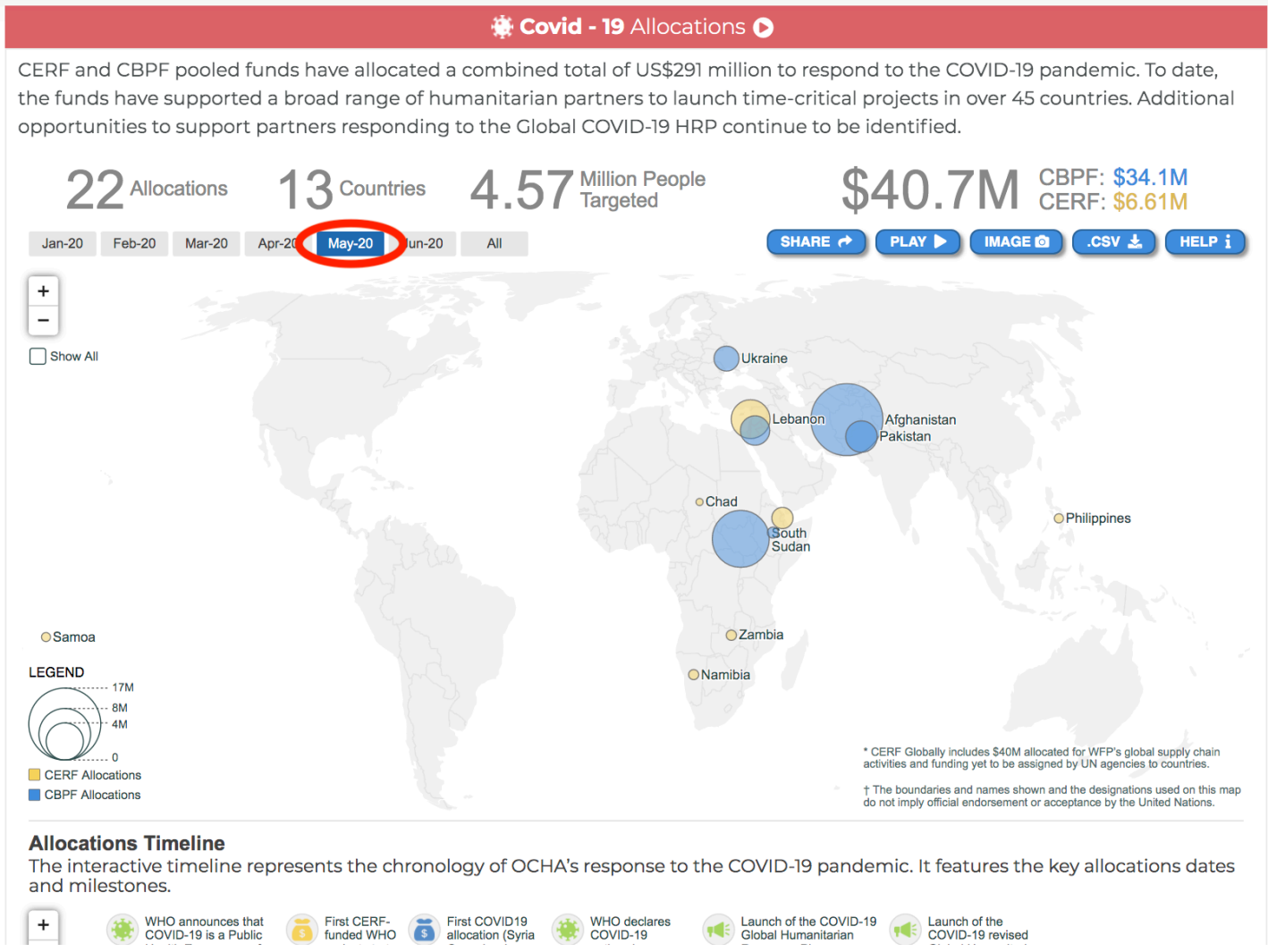
The Allocations' Timeline displays the key dates and milestones of OCHA's response to the Pandemic, including CERF and CBPF allocations' dates.

The circles represent the allocations. The sizes and colors are consistent with the map's legend.

Users can select a specific month using the menu options above the map. The selected period will be highlighted in the Timeline.

CBPF GRANT MANAGEMENT SYSTEM (GMS)

CBPF GRANT MANAGEMENT SYSTEM (GMS)



CBPF GRANT MANAGEMENT SYSTEM (GMS)

Finally, users can launch an animation of the map following the evolution of data through the different time periods; download the map as an image or a PDF; and extract raw data, by respectively using the following blue icons: 'Play', 'Image' and 'CSV'. The 'Help' icon is a short text explanation on how to use the map.



CBPF GRANT MANAGEMENT SYSTEM (GMS)

CBPF GRANT MANAGEMENT SYSTEM (GMS)

 Covid - 19 Allocations 

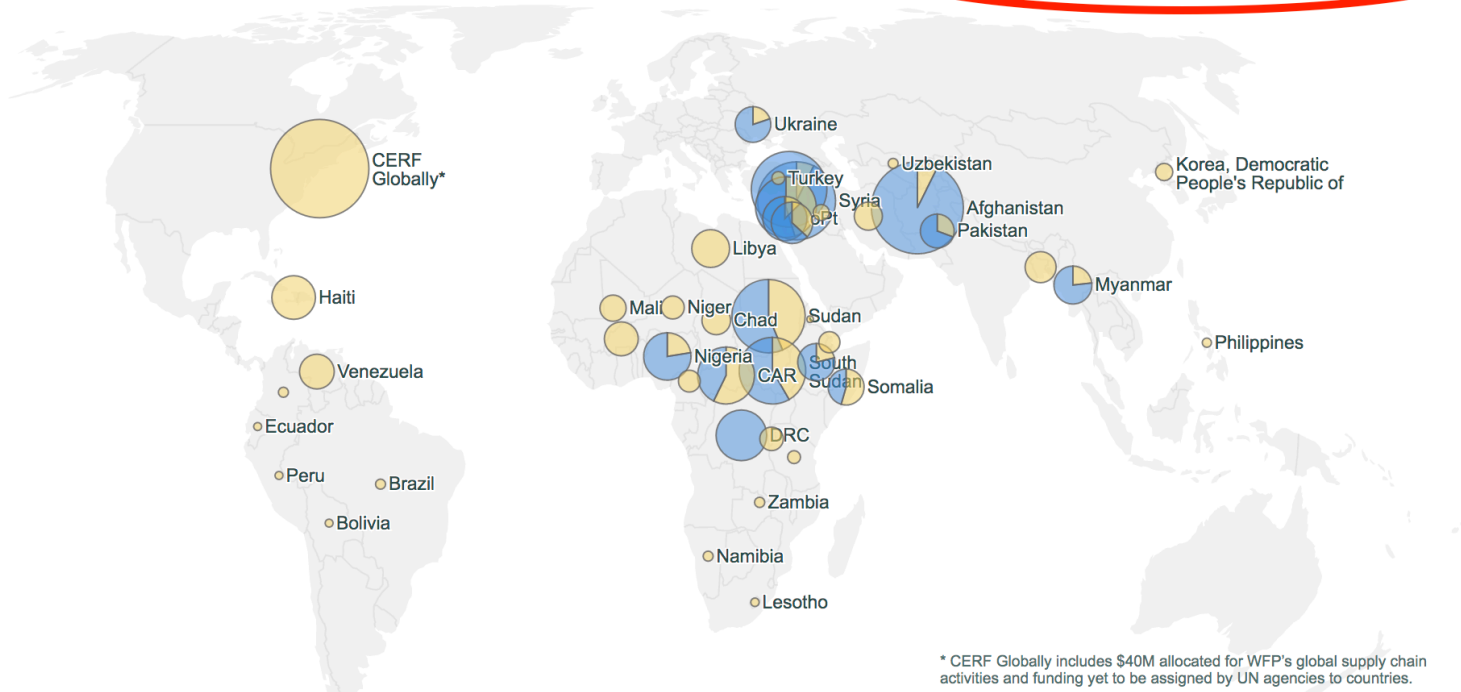
CERF and CBPF pooled funds have allocated a combined total of US\$291 million to respond to the COVID-19 pandemic. To date, the funds have supported a broad range of humanitarian partners to launch time-critical projects in over 45 countries. Additional opportunities to support partners responding to the Global COVID-19 HRP continue to be identified.

165 Allocations **45** Countries **16.5** Million People Targeted **\$291M** CBPF: **\$159M** CERF: **\$132M**

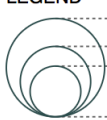
[SHARE !\[\]\(7c1854bf7228b8e89435b784e5855155_img.jpg\)](#)
[PLAY !\[\]\(0e5951b58fc6c097a25f59fca525f9f2_img.jpg\)](#)
[IMAGE !\[\]\(ae443ea643bdb6a0e422a4ddff85c45d_img.jpg\)](#)
[.CSV !\[\]\(bc50c4f62a526d02359ceab6babfebb7_img.jpg\)](#)
[HELP !\[\]\(23fdd8a51baaa1e76e1279baca7399cd_img.jpg\)](#)

- Jan-20
- Feb-20
- Mar-20
- Apr-20
- May-20
- Jun-20
- All**

Show All
 +
 -




LEGEND



 40M
 20M
 10M
 0
 CERF Allocations


* CERF Globally includes \$40M allocated for WFP's global supply chain activities and funding yet to be assigned by UN agencies to countries.

CBPF GRANT MANAGEMENT SYSTEM (GMS)

-  CERF Allocations
-  CBPF Allocations



↑ The boundaries and names shown and the designations used on this map do not imply official endorsement or acceptance by the United Nations.

To know more about the possibilities this map offers, please watch our dedicated **tutorial video** :

<https://ocha.fleeq.io//covid19allocations>(<https://ocha.fleeq.io//covid19allocations>).